

Purrble[®]

Cuddle. Comfort. Calm.



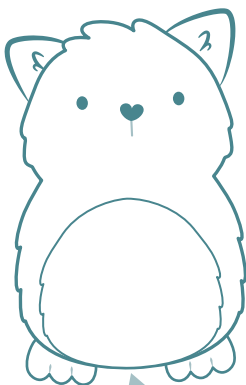
Soothing Vibration

Heartbeat and purr provide comfort



Ultra-Soft Plush

Petting Purrble's soft fur is soothing



Long Battery Life

2 AA batteries included

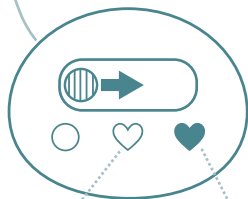


Interactive

Responsive touch and movement sensors

Power On

Slide the switch to start playing! Choose the vibration strength of Purrble's heartbeat with Low Mode or High Mode.



Low Mode

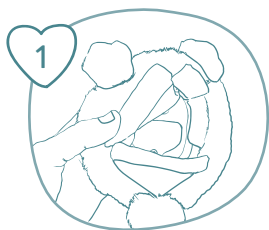
Subtle vibration for quiet surroundings

High Mode

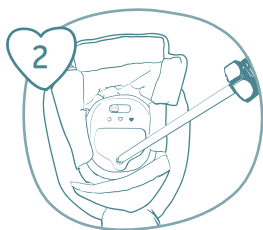
Strong vibration for louder surroundings

Purrble conserves battery life by going to sleep when not in use. Leave Purrble switched on unless you will not be playing for a week or more. Like all electronic products with alkaline batteries, if you aren't going to play with Purrble for a while, it's best to remove the batteries.

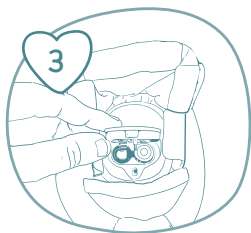
Battery Changing Instructions



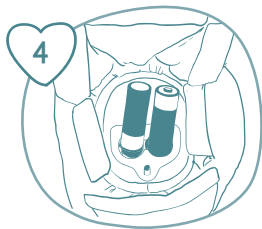
Open the hook-and-loop fastener on the bottom of Purble.



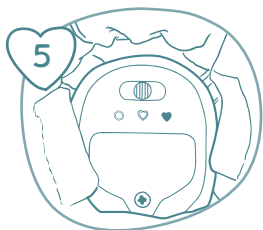
Unscrew the battery cover using a Philips/crosshead screwdriver.



Remove the battery cover, then remove and discard the two batteries.



Replace with two new 1.5V AA alkaline batteries. Be sure to insert the batteries correctly by matching the + and - markings.



Replace the battery cover. Tighten the screw. Close the hook-and-loop fastener.

Dear Grownups,

Meet Purrble – a soft, cuddly little creature that needs help finding calm.

You might have already figured out how to calm the Purrble’s rapid heartbeat by petting their back. But did you know that Purrble is a research-backed way to help your child find calm and build **emotion regulation**?

Emotion regulation is what helps us stay calm and focused when feelings – like anxiety, anger, or boredom – bubble up and pull us off track. Learning emotion regulation is a lot like learning to ride a bike or becoming a reader – the more you practice the skill, the more it becomes a part of who you are. And like a bike or a good book, Purrble mixes skill building with discovery and play to help kids take charge of how they learn.

Purrble works best when kids care about their creature. So here are a few ways that you can help your child get to know their new friend and discover how Purrble can help when big emotions bubble up.



Learn how to care for Purrble

Help your child explore how Purrble is feeling and what could help their new friend (and themselves) find calm.

How do you think Purrble is feeling? Why do you think your friend is feeling that way? What can you do to make Purrble feel better?



Make a Purrble plan

Help your child make a plan for what to do when big emotions bubble up.

What will you do if you need help to find calm? Play with Purrble and see if you can relax together.



Decorate Purrble’s home

Encourage your child to help their friend feel at home. They can decorate Purrble’s cozy box by adding their own designs and decorations.



Make Purrble part of your child’s bedtime routine

As part of their bedtime routine, ask your child to help Purrble relax... it’s the purrfect way to end the day.

From Lab to Home

The research-based technology that powers Purrble combines interactive vibration and social emotional learning principles. We based it on the simple premise that it's comforting to help someone else feel better. Purrble is designed to help kids find calm in the moment and build emotion strength (aka self-regulation skills) over time.

IMPORTANT: BATTERY INFORMATION

Batteries should be replaced by an adult.

CAUTION

1. SAFE HANDLING

- Keep batteries and tools well out of reach of children.
- Batteries must only be inserted by an adult.

2. TO AVOID BATTERY LEAKAGE

- Use only 1.5 V "AA" (LR6) alkaline batteries.
- Carefully insert the batteries correctly by matching the + and - polarity markings.
- Do not mix old batteries and new batteries or standard (carbon-zinc) with alkaline batteries.
- Remove exhausted or dead batteries from the product.
- Remove batteries if the product is not to be used for a long time.
- Do not short-circuit the + and - terminals.

g. RECHARGEABLE BATTERIES: Do not mix these with any other types of batteries. Always remove from the product before recharging. Recharge batteries under adult supervision.

DO NOT RECHARGE OTHER TYPES OF BATTERIES.

3. Should this product cause, or be affected by, local electrical interference, move it away from other equipment. Reset (switching off and back on again or removing and re-inserting batteries) if necessary.

4. Properly dispose of batteries — check call2recycle.org for options near you.

 x2 1.5V AA ALKALINE BATTERIES INCLUDED. Replace with 2x 1.5V "AA" size alkaline batteries. Phillips/cross-head screwdriver (not included) needed to replace batteries.

Contents

- Purrble
- 2 AA batteries (installed)
- "A note from Dr. Treebury" activity card

 **WARNING** Not suitable for children under 3 years. Small parts.

 **DANGER** TO PREVENT ELECTRIC SHOCK
Do not immerse Purrble in water! Surface wash only.
Purrble's fur can be cleaned using a slightly damp cloth or disinfectant wipe.

FCC Compliance Statement

This device complies with part 15 of the FCC Rules. Operation is subject to the following two conditions: (1) This device may not cause harmful interference, and (2) this device must accept any interference received, including interference that may cause undesired operation.

Note: This equipment has been tested and found to comply with the limits for a Class B digital device, pursuant to part 15 of the FCC Rules. These limits are designed to provide reasonable protection against harmful interference in a residential installation. This equipment generates, uses, and can radiate radio frequency energy and, if not installed and used in accordance with the instructions, may cause harmful interference to radio communications. However, there is no guarantee that interference will not occur in a particular installation. If this equipment does cause harmful interference to radio or television reception, which can be determined by turning the equipment off and on, the user is encouraged to try to correct the interference by one or more of the following measures:

- Reorient or relocate the receiving antenna.
- Increase the separation between the equipment and receiver.
- Connect the equipment to an outlet on a circuit different from that to which the receiver is connected.
- Consult the dealer or an experienced radio/TV technician for help.

WARNING: Changes or modifications to this unit not expressly approved by the party responsible for compliance could void the user's authority to operate the equipment.

MADE IN CHINA

Product and colors may vary. Retain this information for future reference.

Includes: Purrble and Printed Materials.

Compliant with Standard Consumer Safety Specification for Toy Safety

ASTM F963-17

All New Materials. Polyester Fibers, Cotton Lining.

© 2021 Committee for Children. All Rights Reserved.

Designed and Manufactured by Sproutel, Inc. Providence, RI 02909 USA

<https://www.purrble.com>, support@purrble.com

Designed by Experts

sproutel

 Committee
for Children®

Model F42D